

One&Only
Royal Mirage, Dubai



Planning & Layouts

Location

Located in the heart of new Dubai overlooking Palm Island Bay, One&Only Royal Mirage is considered as Dubai's most stylish beach resort. Paying tribute to Arabian architecture and hospitality on a truly regal scale the resort is comprised of three equally distinctive properties – The Palace, Arabian Court and Residence & Spa – each one offering its own collection of unique venues makes it the perfect setting for any event.

Facilities

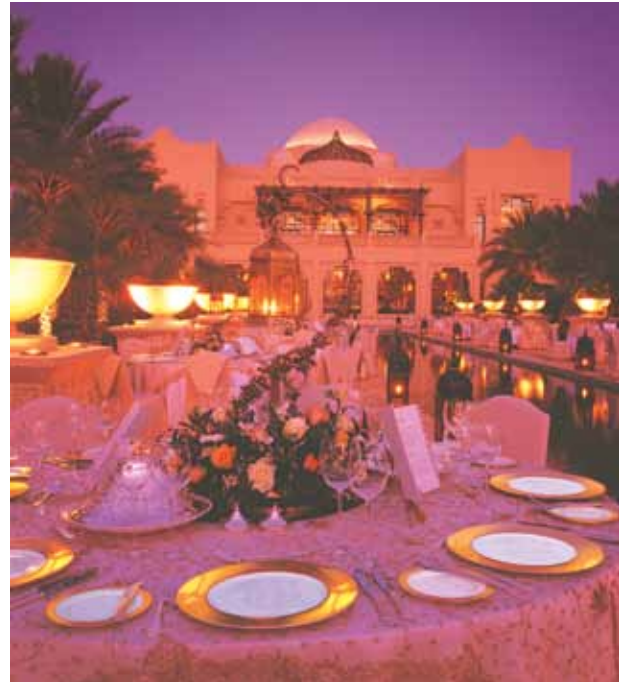
With over 2,500 m² of meeting and function facilities, catering for up to 700 guests, One&Only Royal Mirage offers a collection of unique venues for unforgettable moments, whatever the occasion.

Indoor Venues:

- Two pillar-less ballrooms with high ceilings
- Six multi-use meeting and conference rooms, ranging from 39 to 78m², inclusive of one executive boardroom, all possible with audio-visual installations and a dedicated Business Corner.
- The Arabian Court also features a traditional 'Majlis' style meeting lounge.

Outdoor Venues:

- Al Koufa, a spectacular outdoor amphitheatre with large garden caters for up to 300 guests.
- Half Moon Terrace is a beautifully landscaped garden overlooking the beach and Palm Island Bay.
- Numerous lushly landscaped gardens and picturesque courtyards.



Event Planning

We will be delighted to assist you in making your event unforgettable. From small board meetings to lavish dinner receptions, our highly experienced and dedicated team will tailor make your event specifically to your requirements.

Business and Boardroom Meetings

Whether your meeting is formal or informal, small or large, we have a variety of venues to choose from complete with delegate packages especially designed for our business clientele.

Product Launches

From cars to real estate, our hotel has been the preferred venue for product launches and new concepts.

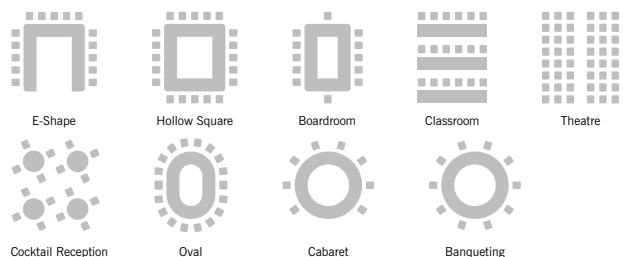
Dinner & Cocktail Receptions

Be it a social gathering, corporate dinner, staff party or cocktails, a range of canapés, set menus, buffets and live stations are presented with flair by our chefs.

Fashion Shows

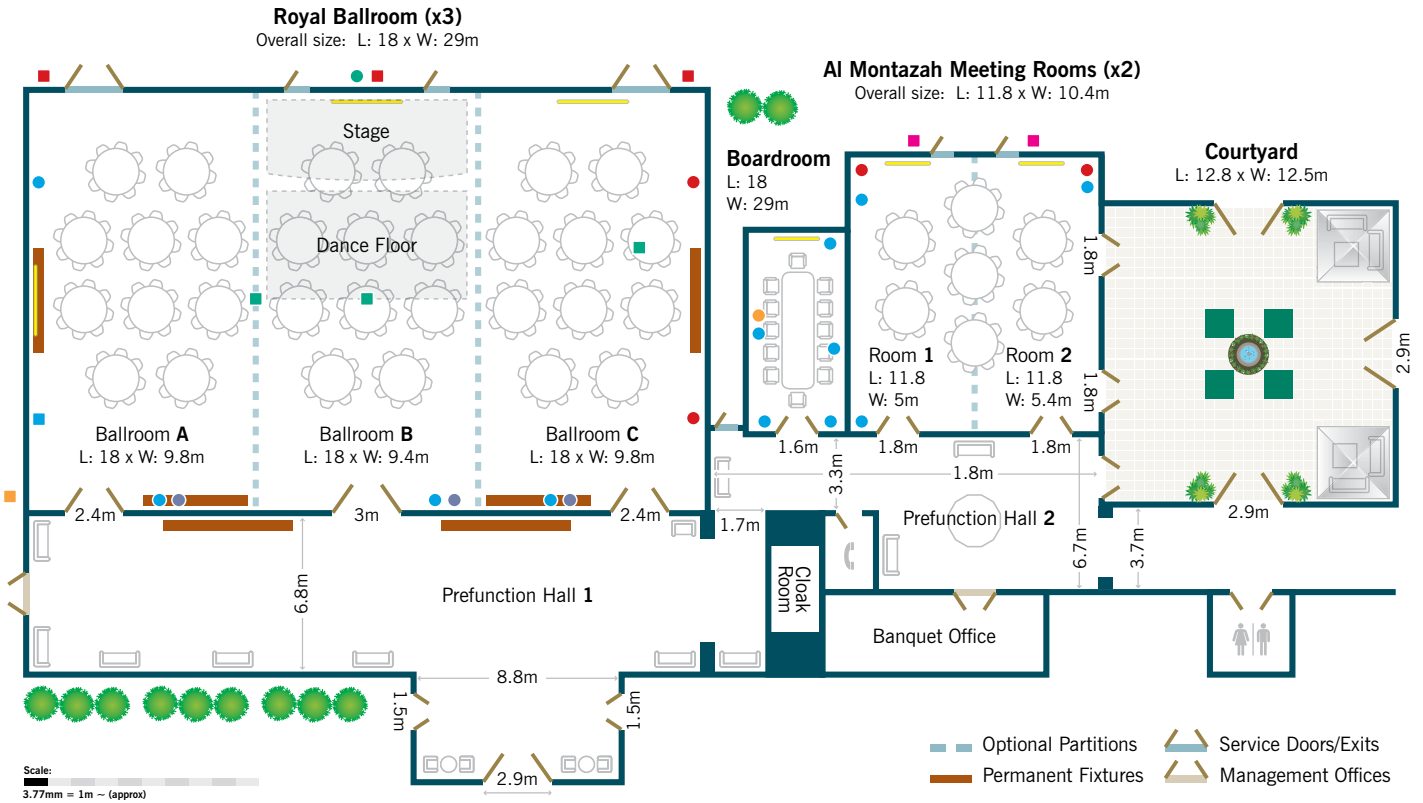
Haute couture, jewellery and perfumes of renowned fashion houses, we have hosted numerous luxury product exhibitions and would be pleased to provide our expertise to ensure your event is extraordinary.

Set ups:



Royal Ballroom

The Palace, One&Only Royal Mirage

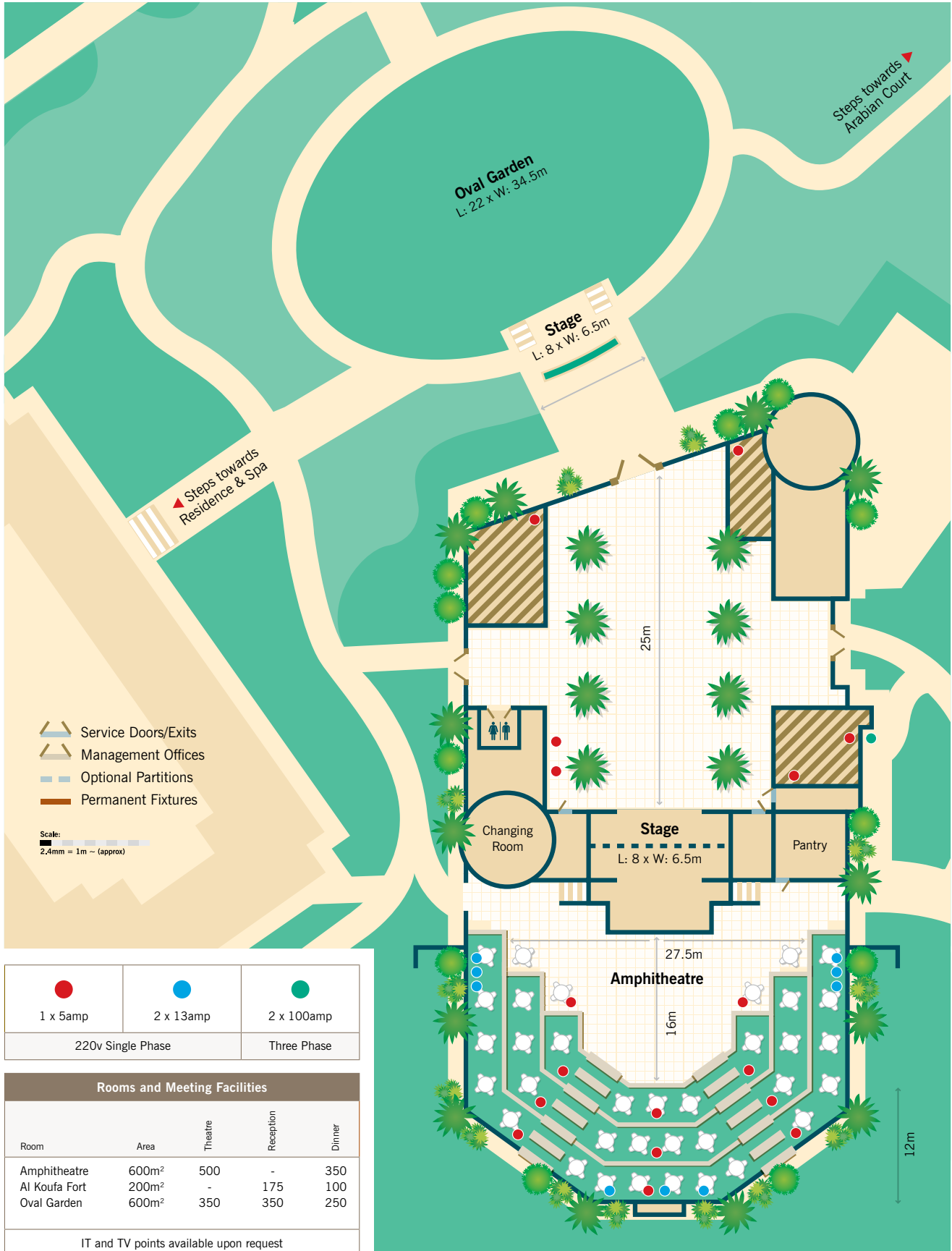





| | | | | | | | |
|--|--|--|--|--|-----------|----------------|-------------|
| | | | | | | | |
| Multi Point 1 | Multi Point 2 | Multi Point 3 | Multi Point 4 | Multi Point 5 | 1 x 5amp | 2 x 13amp | 2 x 100amp |
| 2 x 2 13amp 1ø 2 x 1 Data 2 x 1 AV + TV 8 x Mic 1 x Aux (L + R) 1 x DMX | 2 x 2 13amp 1ø 1 x Aux (L) 1 x Aux (R) 2 x 1 AV 2 x 1 TV | 2 x 2 13amp 1ø 1 x 2 Data 1 x 2 AV + TV 6 x Aux 6 x TIE 1 x MIX Out 1 x Mixer 1 x Stage Box | 3 x 63amp 3ø 2 x 63amp 1ø 9 x DMX CP 1 - 6 (5pin) WP 3,4,5,8,9,12 CP 1 - 6 (19pin) AUX 1 - 6 (3pin) TIE 1 - 6 (3pin) Mix out L + R | 2 x 2 13amp 1ø 2 x 1 Data 2 x 1 AV | 1 x 5amp | | Three Phase |
| | | | | | | | |
| | | | | | | DMX Point | Data Point |
| | | | | | AV Screen | IT Connections | |

| Rooms and Meeting Facilities | | | | | | | Restaurants, Bars & Lounges | | | |
|---|-----------------------------------|--------|---|--------------------------|-----------|--|-----------------------------|----------|---------------------------|--|
| Room | Area | Height | Theatre | Classroom | Reception | Dinner | Style | Capacity | OpenThree Phase | |
| Ballroom A | 176m ² | 6.46m | 120 | 100 | 130 | 100 | Olives | 110 | Breakfast, Lunch & Dinner | |
| Ballroom B | 176m ² | 6.46m | 120 | 100 | 130 | 100 | Tagine | 110 | Dinner | |
| Ballroom C | 176m ² | 6.46m | 120 | 100 | 130 | 100 | Celebrities | 75 | Dinner, Evening | |
| Royal Ballroom | 528m ² | 6.46m | 300 | 300 | 350 | 300 | Lobby Lounge | | All day, Evening | |
| Meeting Room 1 | 55m ² | 4.42m | 30 | 20 | 50 | 35 | The Beach | 100 | Lunch, Dinner & Evening | |
| Meeting Room 2 | 55m ² | 4.42m | 30 | 20 | 50 | 35 | Esplanade | 40 | All day | |
| Boardroom | 39m ² | 3.61m | | Boardroom seating for 12 | | | Kasbar | 350 | Late Evening | |
| Accommodation | 246 Rooms, capacity of 492 guests | | | | | | Outdoor Venue | 300 | Weather Permitting | |
| | | | | | | | Palace Courtyard | 80 | Evening | |
| Business Services | | | | | | | Royal Ballroom Ceiling | | | |
| <ul style="list-style-type: none"> Business 'corner', providing typing, translation, fax service, photocopying and internet assistance | | | <ul style="list-style-type: none"> 'One&Only Royal Mirage Gold Club' with reception & VIP Lounge Tour & Travel office and Car Rental assistance | | | <ul style="list-style-type: none"> Rigging points and DX points available | | | | |

Al Koufa Fort

Arabian Court, One&Only Royal Mirage



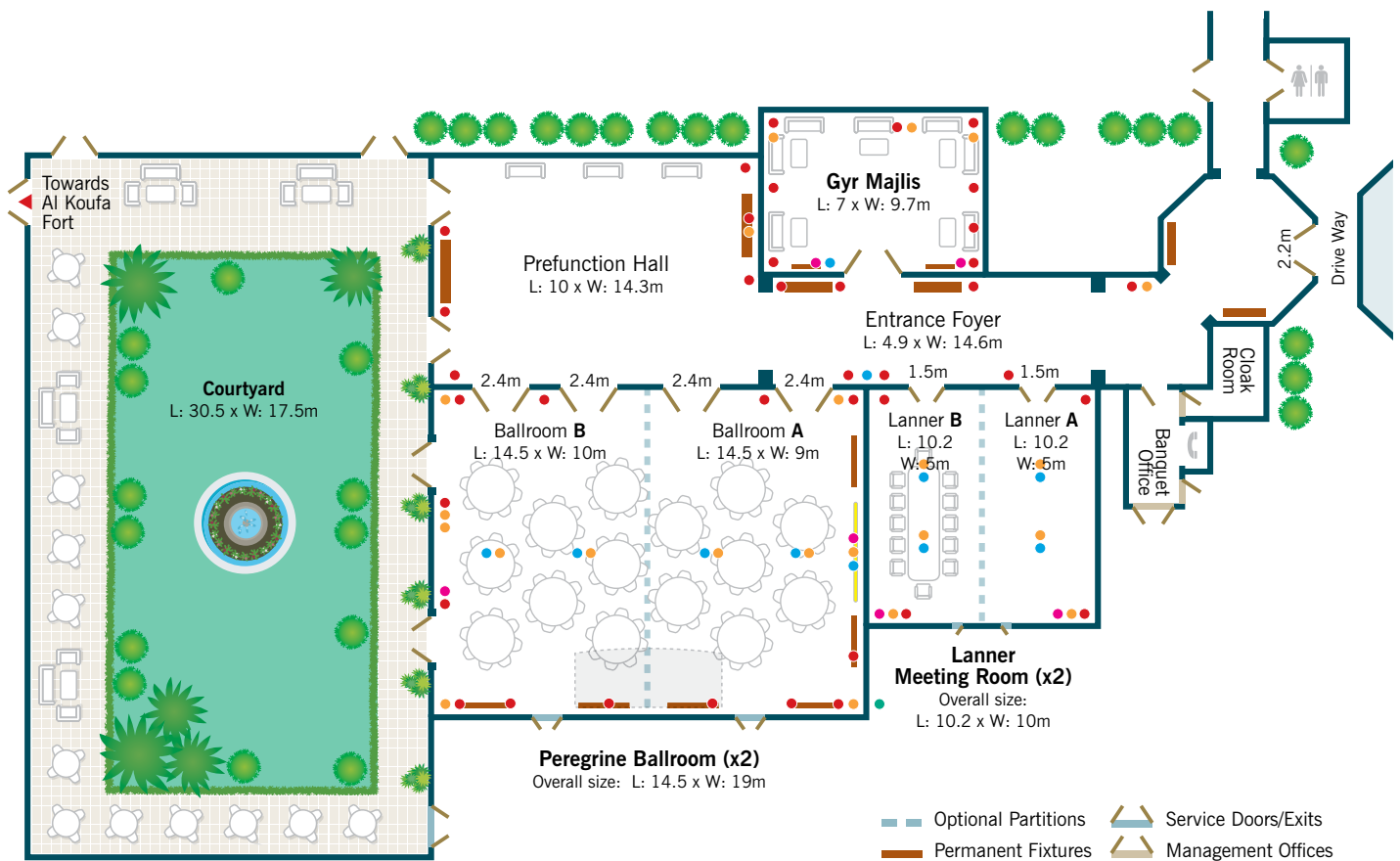
| | | |
|---|---|---|
|  |  |  |
| 1 x 5amp | 2 x 13amp | 2 x 100amp |
| 220v Single Phase | | Three Phase |

| Rooms and Meeting Facilities | | | | |
|------------------------------|-------------------|---------|-----------|--------|
| Room | Area | Theatre | Reception | Dinner |
| Amphitheatre | 600m ² | 500 | - | 350 |
| Al Koufa Fort | 200m ² | - | 175 | 100 |
| Oval Garden | 600m ² | 350 | 350 | 250 |

IT and TV points available upon request

Peregrine Ballroom

Arabian Court, One&Only Royal Mirage



Scale:
3.77mm = 1m ~ (approx)

| | | | | | |
|-------------------|----------------|-----------------|----------------|---------------|-----------------|
| ● 1 x 5amp | ● 2 x 13amp | ● 2 x 100amp | ▬ AV Screen | ● TV Point | ● Data Point |
| 220v Single Phase | | Three Phase | | IT Connectors | |

| Rooms and Meeting Facilities | | | | | | | Restaurants, Bars & Lounges | | |
|---|-----------------------------------|--------|---------|-----------|-----------|--------|--|----------|---------------------------|
| Room | Area | Height | Theatre | Classroom | Reception | Dinner | Style | Capacity | Open |
| Ballroom A | 142.5m ² | 6m | 100 | 80 | 100 | 80 | Nina | 90 | Dinner |
| Ballroom B | 142.5m ² | 6m | 100 | 80 | 100 | 80 | The Rotisserie | 130 | Breakfast, Lunch & Dinner |
| Peregrine Ballroom | 285m ² | 6m | 200 | 160 | 200 | 160 | Eauzone | 90 | Lunch & Dinner |
| Lanner Room A | 50m ² | 4.8m | 30 | 20 | 45 | 35 | The Rooftop Lounge | 150 | Evening |
| Lanner Room B | 50m ² | 4.8m | 30 | 20 | 45 | 35 | Samovar Lounge | 75 | All day & Evening |
| Gyr Majlis | | 4m | | | | | Arabian Courtyard | 100 | Evening |
| Accommodation | 172 Rooms, capacity of 344 guests | | | | | | | | |
| Business Services | | | | | | | Royal Ballroom | | |
| • Business 'corner', providing typing, translation, fax service, photocopying and internet assistance | | | | | | | • Tour & Travel office and Car Rental assistance | | |

One&Only Royal Mirage
 PO Box 37252 Dubai, UAE
 Jumeira Beach
 Telephone + 971 4 399 99 99
 Facsimile + 971 4 399 99 98
 banquet@oneandonlyroyalmirage.ae
 oneandonlyresorts.com

©One&Only Resorts 2010



Note: "Dimensions are for reference only and may be distorted while being viewed or printed."